

**NUP85 Antibody (N-Term)**  
**Purified Rabbit Polyclonal Antibody (Pab)**  
**Catalog # AP22048a****Specification**

---

**NUP85 Antibody (N-Term) - Product Information**

|                   |                        |
|-------------------|------------------------|
| Application       | WB,E                   |
| Primary Accession | <a href="#">Q9BW27</a> |
| Reactivity        | Human                  |
| Host              | Rabbit                 |
| Clonality         | polyclonal             |
| Isotype           | Rabbit IgG             |
| Calculated MW     | 75019                  |

**NUP85 Antibody (N-Term) - Additional Information****Gene ID** 79902**Other Names**

Nuclear pore complex protein Nup85, 85 kDa nucleoporin, FROUNT, Nucleoporin Nup75, Nucleoporin Nup85, Pericentrin-1, NUP85, NUP75, PCNT1

**Target/Specificity**

This NUP85 antibody is generated from a rabbit immunized with a KLH conjugated synthetic peptide between 163-195 amino acids from human NUP85.

**Dilution**

WB~~1:2000

E~~Use at an assay dependent concentration.

**Format**

Purified polyclonal antibody supplied in PBS with 0.09% (W/V) sodium azide. This antibody is purified through a protein A column, followed by peptide affinity purification.

**Storage**

Maintain refrigerated at 2-8°C for up to 2 weeks. For long term storage store at -20°C in small aliquots to prevent freeze-thaw cycles.

**Precautions**

NUP85 Antibody (N-Term) is for research use only and not for use in diagnostic or therapeutic procedures.

**NUP85 Antibody (N-Term) - Protein Information****Name** NUP85**Synonyms** NUP75, PCNT1

**Function** Essential component of the nuclear pore complex (NPC) that seems to be required for NPC assembly and maintenance (PubMed:[12718872](#)). As part of the NPC Nup107-160 subcomplex plays a role in RNA export and in tethering NUP96/Nup98 and NUP153 to the nucleus (PubMed:[12718872](#)). The Nup107-160 complex seems to be required for spindle assembly during mitosis (PubMed:[16807356](#)). NUP85 is required for membrane clustering of CCL2-activated CCR2 (PubMed:[15995708](#)). Seems to be involved in CCR2-mediated chemotaxis of monocytes and may link activated CCR2 to the phosphatidyl-inositol 3- kinase-Rac-lammellipodium protrusion cascade (PubMed:[15995708](#)). Involved in nephrogenesis (PubMed:[30179222](#)).

#### Cellular Location

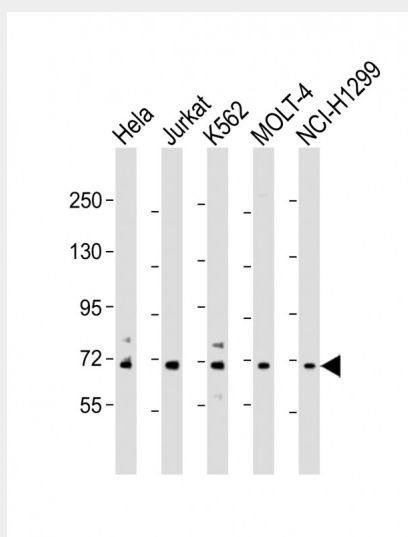
Nucleus, nuclear pore complex. Chromosome, centromere, kinetochore. Cytoplasm, cytoskeleton, spindle. Cytoplasm. Nucleus membrane. Note=During mitosis, localizes to the kinetochores and spindle poles (PubMed:[12718872](#), PubMed:[16807356](#)). Upon CCL2 stimulation translocates from the cytoplasm to the membrane and colocalizes with CCR2 at the front of migrating cells (PubMed:[15995708](#)).

#### NUP85 Antibody (N-Term) - Protocols

Provided below are standard protocols that you may find useful for product applications.

- [Western Blot](#)
- [Blocking Peptides](#)
- [Dot Blot](#)
- [Immunohistochemistry](#)
- [Immunofluorescence](#)
- [Immunoprecipitation](#)
- [Flow Cytometry](#)
- [Cell Culture](#)

#### NUP85 Antibody (N-Term) - Images



All lanes : Anti-NUP85 Antibody (N-Term) at 1:2000 dilution Lane 1: HeLa whole cell lysate Lane 2: Jurkat whole cell lysate Lane 3: K562 whole cell lysate Lane 4: MOLT-4 whole cell lysate Lane 5: NCI-H1299 whole cell lysate Lysates/proteins at 20 µg per lane. Secondary Goat Anti-Rabbit IgG, (H+L), Peroxidase conjugated at 1/10000 dilution. Predicted band size : 75 kDa Blocking/Dilution buffer: 5% NFD/MTBST.

**NUP85 Antibody (N-Term) - Background**

Essential component of the nuclear pore complex (NPC) that seems to be required for NPC assembly and maintenance. As part of the NPC Nup107-160 subcomplex plays a role in RNA export and in tethering NUP98/Nup98 and NUP153 to the nucleus. The Nup107-160 complex seems to be required for spindle assembly during mitosis. NUP85 is required for membrane clustering of CCL2-activated CCR2. Seems to be involved in CCR2-mediated chemotaxis of monocytes and may link activated CCR2 to the phosphatidyl- inositol 3-kinase-Rac-lammellipodium protrusion cascade.

**NUP85 Antibody (N-Term) - References**

Cronshaw J.M.,et al.J. Cell Biol. 158:915-927(2002).  
Terashima Y.,et al.Nat. Immunol. 6:827-835(2005).  
Ota T.,et al.Nat. Genet. 36:40-45(2004).  
Bechtel S.,et al.BMC Genomics 8:399-399(2007).  
Zody M.C.,et al.Nature 440:1045-1049(2006).